

INSTALLATION DETAILS FOR TWINWALL

Step 1 - Cut the Polycarbonate Joiner 50mm shorter than required.

Step 2 - Cut the Twinwall sheet to the required length.

Step 3a (SEE BELOW) - For the Polycarbonate H Joiner, pre-drill a 6mm hole before fixing it at every 400mm intervals (300mm for high wind zones) using PSP's Twinwall screws.

Step 3b - For the bottom part of the 2 Piece Polycarbonate Joiner, pre-drill a 6mm hole before fixing it at every 400mm intervals (300mm for high wind zones) using PSP's Twinwall screws.

Step 4 - Peel off approx 50mm of the protective masking along all edges of the sheet.

Step 5 - Apply Twinwall Anti-Dust Tape to the bottom and top ends of the sheets.

Step 6a - For Polycarbonate H Joiner, insert Twinwall sheets to each side Joiner. NB: Can use to a small amount of soapy water to help slide the sheets into the H Joiner. Ensure to leave at least 2mm between sheet and Polycarbonate Joiner for expansion and

contraction. For 1220mm wide sheets, ensure to pre-drill a 6mm hole and fix PSP's Twinwall screws at every 300mm along the edge of purlins/rafters and every 500mm of internal purlins/rafters.

Step 6b (SEE BELOW) - For 2 Piece Polycarbonate Joiner, place Twinwall sheets onto each side of the bottom part of the Joiner. Ensure to leave at least 2mm between sheet and Polycarbonate Joiner for expansion and contraction. Then connect and click the top and bottom part of the 2 Piece Polycarbonate Joiner. For 1220mm wide sheets, ensure to pre-drill a 6mm hole and fix PSP's Twinwall screws at every 300mm along the edge of purlins/rafters and every 500mm of internal purlins/rafters.

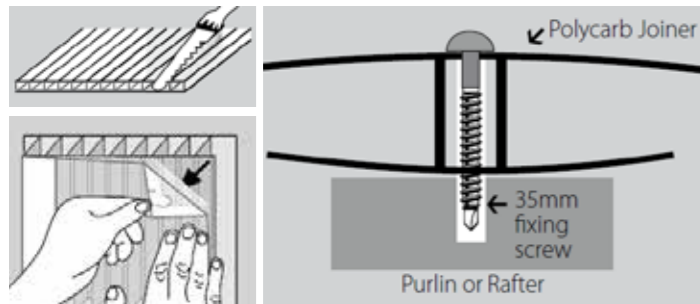
Step 7 - Slide, set and fix the Polycarbonate Joiner along the loose end of the sheet.

Step 8 - Repeat steps 3 to 7 until the roof is completed.

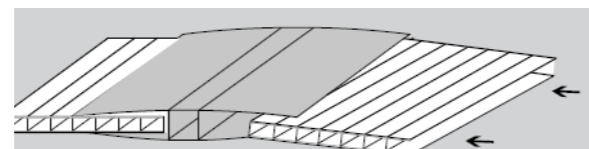
Step 9 - Insert the Polycarbonate End Cap to bottom and top ends of the Twinwall sheets.

Step 10 - Remove all protective masking.

Step 3a



Step 6b



Grey Tint



Clear

SAFETY

Never walk directly on Suntuf Twinwall sheets. Use a board placed across at least 3 rafters to spread the load. Ensure all local safety building regulations/codes are adhered to.

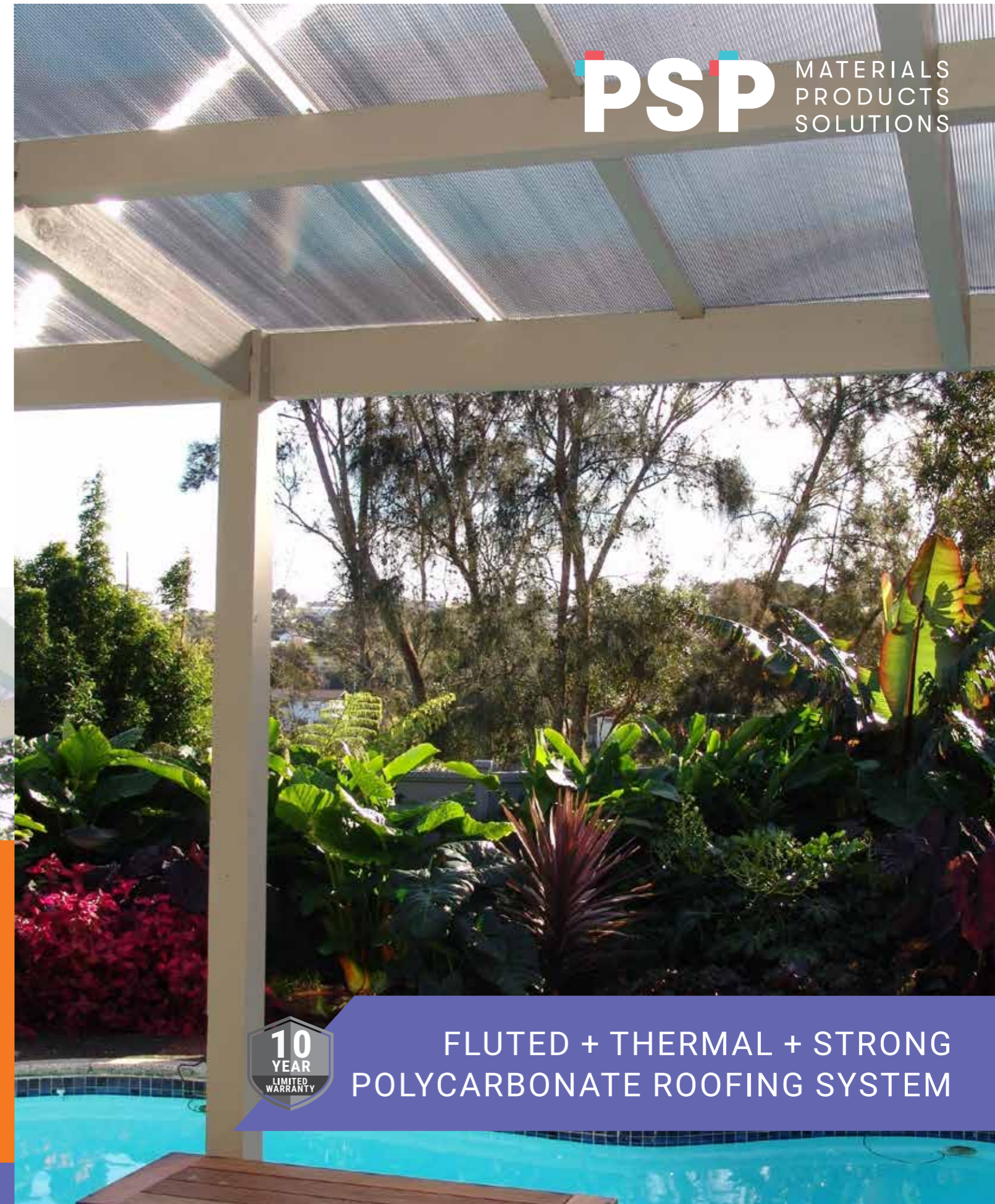
HANDLING, STORAGE & MAINTENANCE

Twinwall sheets should be handled with care to avoid any unnecessary scratches prior to installation. Twinwall should be stored on a flat surface away from direct sunlight. When stacked together this will prevent possible magnification of the sun's rays through the top sheets which may cause distortion of the lower sheets. Prevent moisture getting between stored sheets.

For maintenance information, please visit our website or contact PSP Translucent Roofing if you are unsure.

Suntuf Twinwall™

PSP MATERIALS
PRODUCTS
SOLUTIONS



FLUTED + THERMAL + STRONG
POLYCARBONATE ROOFING SYSTEM

SUNTUF Twinwall™

TWINWALL POLYCARBONATE ROOFING

The high performance roofing that's designed for warmth & toughness.

Twinwall sheets are available in 8.0mm thickness and Clear and Grey Tint. It is an ideal, lightweight roofing panel that comes with a 10 year limited warranty, with various sheet sizes and accessories to help you complete your project. Twinwall is a perfect solution for any translucent roofing installation when you require insulation and UV protection. It can be installed using our Polycarbonate or aluminium glazing system.

Properties	8 mm Thickness
Width	1220mm
Kg per m ²	1.61
Clear Lengths (m)	1.8, 2.4, 3.0, 3.6, 5.5
Grey Tint Lengths (m)	1.8, 2.4, 3.0, 3.6, 5.5
R Value	0.303
Minimum Curved Radius (mm)	1200

FEATURES



Blocks 99.9% of harmful UV Rays, whilst still letting through good UV.



Excellent thermal insulation properties.



Can be curved along the length.



Easy to install especially with our Polycarbonate Jointer System.



Its approximately 250 times stronger than standard glass.



Sheet lengths up to 5.5m available in all colours.

TWINWALL JOINTERS & END CAPS

The H jointer is a one piece system that is light weight and easy to install. The two-piece jointer set is lightweight and easy to install. End Caps are also available for Twinwall.

TWINWALL FIXINGS

Stainless Steel Twinwall Fixings with rubber washers. Available in jars of 50.

TWINWALL TAPE

ANTI-DUST (BREATHABLE) TAPE - 10M PER PACK

Non-woven tape system designed to stop mould, algae, insects and dust from accumulating within the walls of the Twinwall Polycarbonate sheets. It is also designed to expand and contract with the sheets.



PLANNING/PREPARING THE SUPPORT STRUCTURE

- Install the sheets with the flutes parallel to rain flow and with a minimum pitch of at least 5°, we recommend 10°. In roof and wall type applications always ensure that the flutes are positioned vertically.
- Supporting beams must be at least 30mm wide to ensure good stability of sheets and fastening accessories.
- Twinwall sheets should normally be fixed to rafters, purlins or studs at a maximum of 610mm centres. In areas exposed to high wind areas, spacing should be reduced to 400mm centres.
- It is important that all Building Regulations are met and/or a qualified professional/builder checks and approves the structure before installing Twinwall.
- Complete all the metal/timber work and painting before installation of Twinwall sheets
- Check dimensions on site, and plan the roofing requirements before ordering products for the project

PREPARING THE TWINWALL ROOFING SYSTEM

- Use a Stanley knife, saw or circular blade to cut the Twinwall sheets, Polycarbonate Jointers, End Caps to desired length and/or width. When cutting the width of Twinwall sheets, ensure you cut down the middle of the flute to keep the flutes sealed.
- **Note:** Twinwall sheets and Polycarbonate Jointers will expand and contract (approx 3-5mm in length and 2mm in width). If cutting sheets with a circular saw, ensure the flutes of the sheets are clear of saw dust (air gun is the ideal method).
- Fold back the printed sheet protection film 50mm on each side.
- Attach Twinwall Anti-Dust Tape to the bottom (breathable tape) and top (solid tape) ends of the sheets.
- **Note:** It is essential to use Polycarbonate End Caps in conjunction with the Twinwall Anti-Dust Tape to prevent the adhesive in the tape from drying up (unless tape is encapsulated by a glazing system).
- Fix the Polycarbonate End Caps to the sheet with the short side on top of the sheet. Do not fix the Polycarbonate End Cap flush with the Twinwall sheets, ensure you allow a 2-3mm gap to prevent condensation.
- Use a metal saw to cut the "F" Sections (Side Profiles) into sections matching the length of sheets. The "F" Sections (Side Profiles) are to finish off the ends of your roof/wall if applicable.
- **Note:** "F" Sections can be installed with blade facing upwards or downwards depending on flashing requirements.

PSP MATERIALS
PRODUCTS
SOLUTIONS

